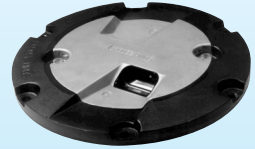


PRO III™ IRGL/ISBL



Inset Stop Bar and Runway Guard Lights

Compliances: FAA AC 150/5345-46: L-852 G and S

IRGL / ISBL

Applications

The IRGL and ISBL fixtures are used for runway incursion protection and traffic control on taxiways just before active runways. They are required for SMGCS operations during low visibility conditions as defined in FAA AC 150/5340-30 and AC 120-57A. These unidirectional lights are designed for use in all weather conditions with any kind of control system including the Digitrac® Control and Monitoring System.

Features



- ETL Certified
- Low profile, < .25" (6 mm) – FAA Style 3
- Unique combination of high-strength aluminum optical assembly and ductile iron outer ring for snow plow protection
- Low power consumption
- Few parts to stock
- Easy to maintain – no sealant required for prism or feed-through assembly replacement
- Pressure test plug for seal integrity verification
- Long lamp life – Quartz Halogen, 105 W
- Control and Monitoring – Fixture can be supplied with a Crouse-Hinds Logitrac for individual lamp control and monitoring as required for flashing guard light operation or stop bar control. Contact Crouse-Hinds for more info

Dimensions:	inches (mm)
Instruction Manual:	9927
Shipping Weight:	23.0 lbs. 10.4 kg
Shipping Volume:	0.7 cu. ft. 0.02 m ³

Ordering Information



Fixture Type:

- G = L-852G, Runway guard light
- S = L-852S, Stop bar light

Color Filters:

- Y = Yellow (L-852G only)
- R = Red (L-852S only)
- YX = Yellow/Blank*
- RX = Red/Blank*

Fixture Diameter:

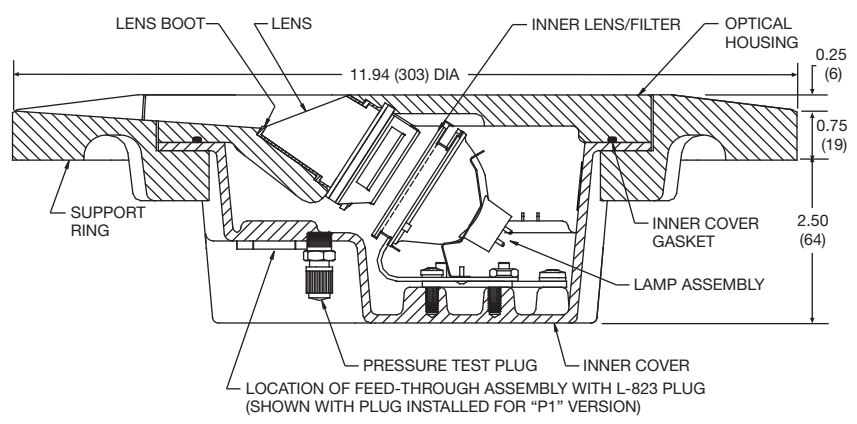
- 12F = Optical assembly with 12" FAA support ring
- NSR = Optical assembly without support ring

Option:

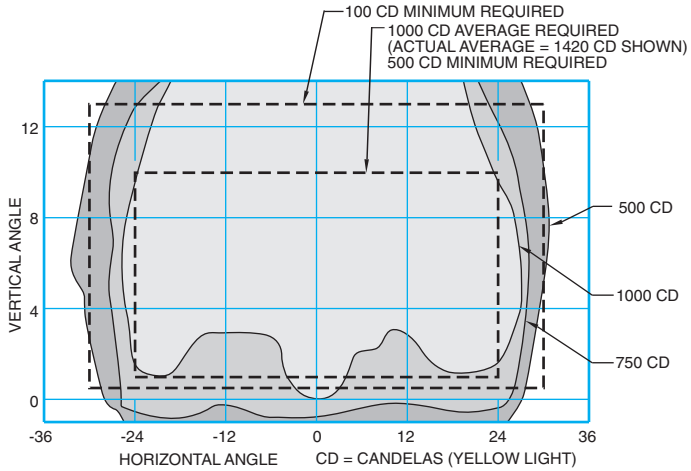
- G = External gasket between optical assembly and support ring
(Note: Optical assemblies with external gasket will only fit support rings marked "G" on top surface.)

* Blank color units will have a threaded plug installed (blank is not considered a color).

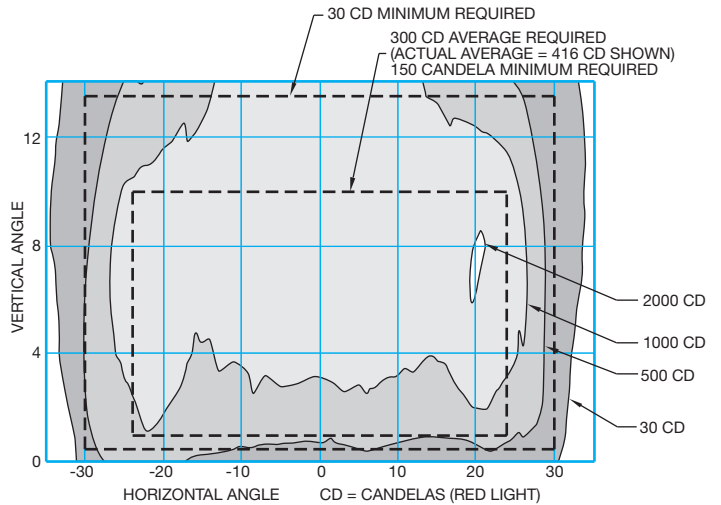
Outline Drawing



Typical Photometric Data



L-852G Runway Guard Light



L-852S Stop Bar Light

Accessories

Catalog Number	Item Description	Catalog Number	Item Description
AC24242Q200303	Base L-868B, Class I*, 24" Deep	19999	Lifting Tool (for outer ring)
33004	Isolation Transformer – 100 W, 6.6/6.6 A	T6540-02-01-00	Logitrac Device, L852s
33005	Isolation Transformer – 100 W, 20A/6.6 A	T6540-01-01-00	Logitrac Device, L852g
823KP-D4 -D4	Connector Kit – L-823, 8AWG, .32" to .43" O.D.		
10047-2154	Heat Shrink Kit – 1 piece		
10047-1425	Heat Shrink Kit – 2 piece		

* Sectional bases may be required depending upon the paving technique.

Renewal Parts

Part Number	Description	Part Number	Description
21128	Lamp – 105 W, 6.6 A	21121	Feed-through Assembly – 2 Lamp, 1 Connector
21126-AR	Lens Replacement Kit	21122	Feed-through Assembly – 1 Lamp, 1 Connector
21130-TY	Fresnel Filter – Yellow	10048-25	Gasket Lubricant – 5.3 oz Container
21130-TR	Fresnel Filter – Red	852X3-X-NSR	Spare Optical Assembly
21124*	Gasket – Bottom Cover	21180	External support ring gasket
10035-62*	O-Ring – Bottom Cover	21508	Ductile Iron Mounting Ring
21491	Fresnel Filter – Clear	21132	Fresnel gasket
21490	Filter – Red		
21488	Bracket – Red Filter		
21487	Bracket – Clear Fresnel		

* See instruction manual.

Note:

1. Lens Replacement Kit includes lens, lens boot, lens retaining gasket, gasket lubricant, and lens retaining bracket and screws.

