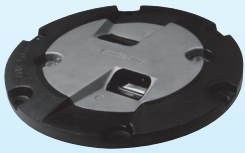


# PRO III™ TCL1

## Taxiway Centerline Light - Single Lamp



**TCL1**

**Compliances:** FAA AC 150/5345-46: L-852 A, and C  
ICAO Annex 14: Fig. A2-13 & A2-15  
UFC 3-535-01

### Applications

The TCL1 is a taxiway centerline light that is used primarily as a ground traffic aid during periods of low visibility to guide aircraft between the runway and the parking stand. The TCL1 is a single 45W lamp fixture that supplies the same performance as our standard Pro III™ Fixture. It is not available with a blank side (i.e. GX or YX)

### Features

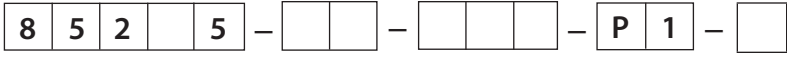


- ETL Certified
- Low profile, < .25" (6 mm) – FAA Style 3
- Unique combination of high-strength aluminum optical assembly and ductile iron outer ring for snow plow protection
- Low power consumption
- Few parts to stock
- Easy to maintain – no sealant required for prism or feed-through assembly replacement
- Pressure test plug for seal integrity verification

### Outline Drawing

|                            |                                    |
|----------------------------|------------------------------------|
| <b>Dimensions:</b>         | inches<br>(mm)                     |
| <b>Instruction Manual:</b> | 2410                               |
| <b>Shipping Weight:</b>    | 21.0 lbs.<br>9.5 kg                |
| <b>Shipping Volume:</b>    | 0.7 cu. ft.<br>0.02 m <sup>3</sup> |

### Ordering Information



#### Fixture Type:

- A = L-852A (Narrow, Cat. II)
- C = L-852C (Narrow, Cat. III)

#### Color Filters:

- YY = Yellow/Yellow
- GY = Green/Yellow
- GG = Green/Green

#### Fixture Diameter:

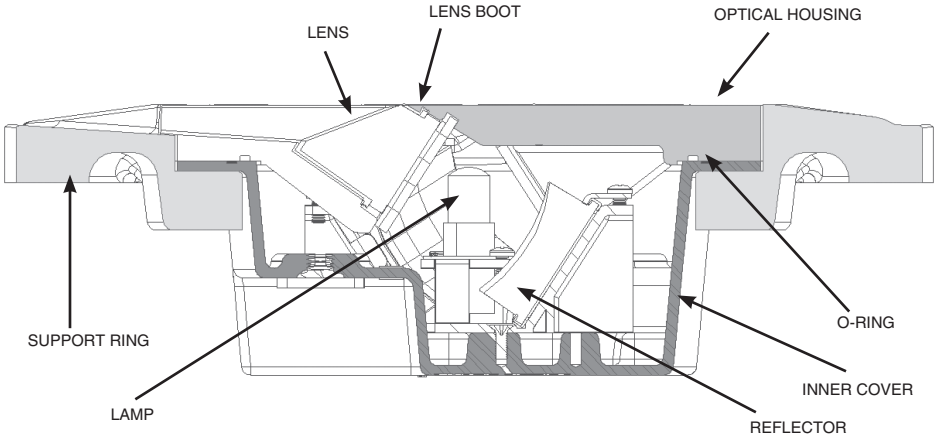
- 12F = Optical assembly with 12" FAA support ring
- NSR = Optical assembly without support ring

#### L-823 Plug Connection:

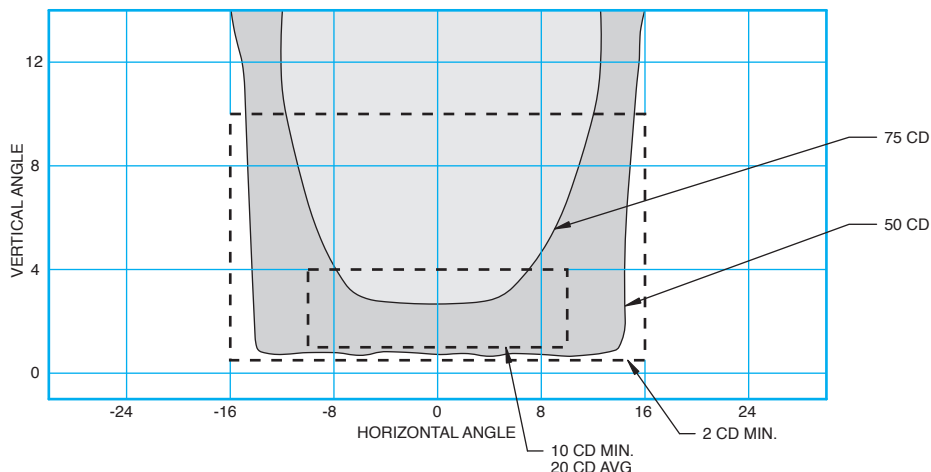
P1 = One plug (Blank color units will have a threaded cap installed.)

#### Option:

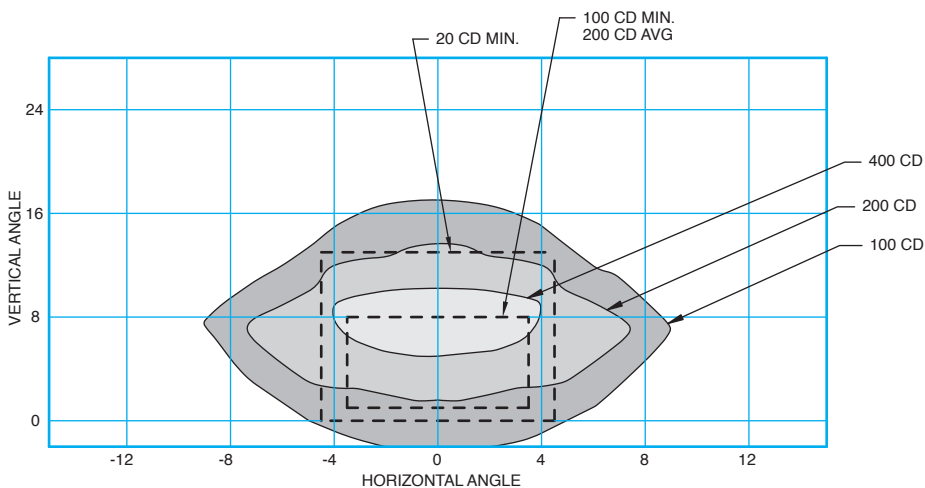
G = External gasket between optical assembly and support ring  
(Note: Optical assemblies with external gasket will only fit support rings marked "G" on top surface.)



## Typical Photometric Data



**FAA L-852A Narrow (Straight Section), CAT II**



**FAA L-852C Narrow, (Straight Section), CAT III**

## Accessories

| Catalog Number | Item Description                        | Catalog Number | Item Description                                |
|----------------|---|----------------|---|
| AC24242H200303 | Base: L-868B, Class I*, 24" Deep        | 823KP-D4-D4    | Connector Kit – L-823, 8 AWG, .32" to .43" O.D. |
| 33001          | Isolation Transformer – 45 W, 6.6/6.6 A | 10047-2154     | Heat Shrink Kit – 1 Piece                       |
|                |   | 10047-1425     | Heat Shrink Kit – 2 Piece                       |
|                |   | 19999          | Lifting Tool (for outer ring)                   |

\* Sectional bases may be required depending upon the paving technique

## Renewal Parts

| Part Number | Description                   | Part Number     | Description                                 |
|-------------|-------------------------------|-----------------|---|
| 21126-G     | Lens Replacement Kit – Green  | 21122           | Feed-through Assembly – 1 Lamp, 1 Connector |
| 21126-Y     | Lens Replacement Kit – Yellow | 10048-25        | Gasket Lubricant – 5.3 oz Container         |
| 21508       | Ductile Iron Mounting Ring    | 852X3-XX-NSR-XX | Spare Optical Assembly                      |
|             |                               | 10035-62        | O-Ring                                      |
|             |                               | 10047-2888      | 45W Lamp, 6.6A                              |

### Note:

1. Lens Replacement Kit includes lens, lens boot, lens retaining gasket, gasket lubricant, and lens retaining bracket and screws.

